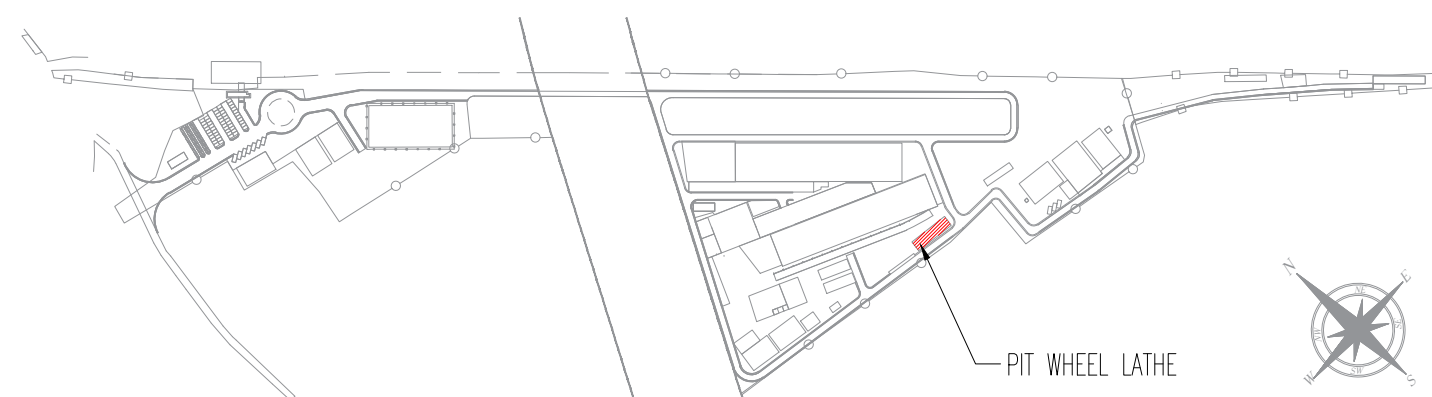



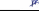




1. THIS DRAWING IS FOR INFORMATION AND REFERENCE AS A GENERAL GUIDANCE ONLY.
2. ALL DEPOT FACILITIES, PLANTS & MACHINERIES, ACCOMMODATION FACILITIES, SYSTEM WIDE REQUIREMENTS ETC. SHALL BE VERIFIED FOR MAINTENANCE REQUIREMENT OF ROLLING STOCK AND INFRASTRUCTURE FACILITIES.
3. ALL DIMENSIONS ARE IN MM UNLESS NOTED OTHERWISE AND TO BE READONLY NOT MEASURED
4. ABSOLUTE RAIL LEVEL SHALL BE DERIVED FROM APPROVED ALIGNMENT DRAWINGS.
5. STRUCTURE SYSTEM SHOWN IS INDICATIVE. ALL STRUCTURE MEMBER SIZES TO BE DETAILED BY DESIGNER AT LATER STAGE.
6. THIS DRAWINGS HAVE BEEN DEVELOPED IN CONFORMITY TO DPR,SDO, BSRP & OTHER CODA REQUIREMENTS.
7. SYSTEM ROOM SIZES, HEIGHTS, DOOR SIZE, FLOOR HEIGHT AND CUTOFF DIMENSIONS TO BE VERIFIED BY RELEVANT DISCIPLINES OF ENGINEERING.
8. SHAFTS FOR ELECTRICAL, S&T, PLUMBING, DRAINAGE, SEWAGEDISPOSAL, WATER HARVESTING, FIRE AND OTHER SYSTEMS SHALL BE PROVIDED AS PER SYSTEM AND MEP REQUIREMENTS.
9. ALL FINISHES ARE SUBJECT TO K-RIDE APPROVAL.
10. PITWHEEL LATHE INTERNAL ARRANGEMENT WILL BE AS PER VENDOR DWG.
11. CRANE ACCESS LADDERS ARE PORTABLE.
12. TURBO VENT POSITIONS WILL BE FINALIZED BY IGBC.
13. ALL ITEMS ARE AS PER BOQ.
14. LEVELS SHOWN ARE INDICATIVE FINAL LEVELS SHOULD BE CONFIRMED BEFORE EXECUTION OF THE WORK.
15. M&P INPUTS ARE MARKED TENTATIVELY

ABBREVIATIONS			
DE	DEAD END		
BS	BUFFER STOP		
CL	CENTER LINE		
HP	HIGH POINT		
RWP	RAIN WATER PIPE		
RWG	RAIN WATER GUTTER		
WINDOW SCHEDULE			
CODE	DIMENSION	SILL	LINTEL
FL1	6000X3000 MM	2100 MM	5100 MM
FLOOR FINISH SCHEDULE			
CODE	DESCRIPTION		
F1	HARDONITE FLOORING		
INTERNAL WALL FINISH SCHEDULE			
CODE	DESCRIPTION		
I1	ACRYLIC EMULSION PAINT		
I5	100 MM HIGH CEMENT SKIRTING		
I10	EXTERIOR EMULSION PAINT		
	200 MM THK BLOCKWORK		
	STRUCTURAL WALL AS/STR.Dwg		
	GALVALUME SHEET		
	TURBO VENT		

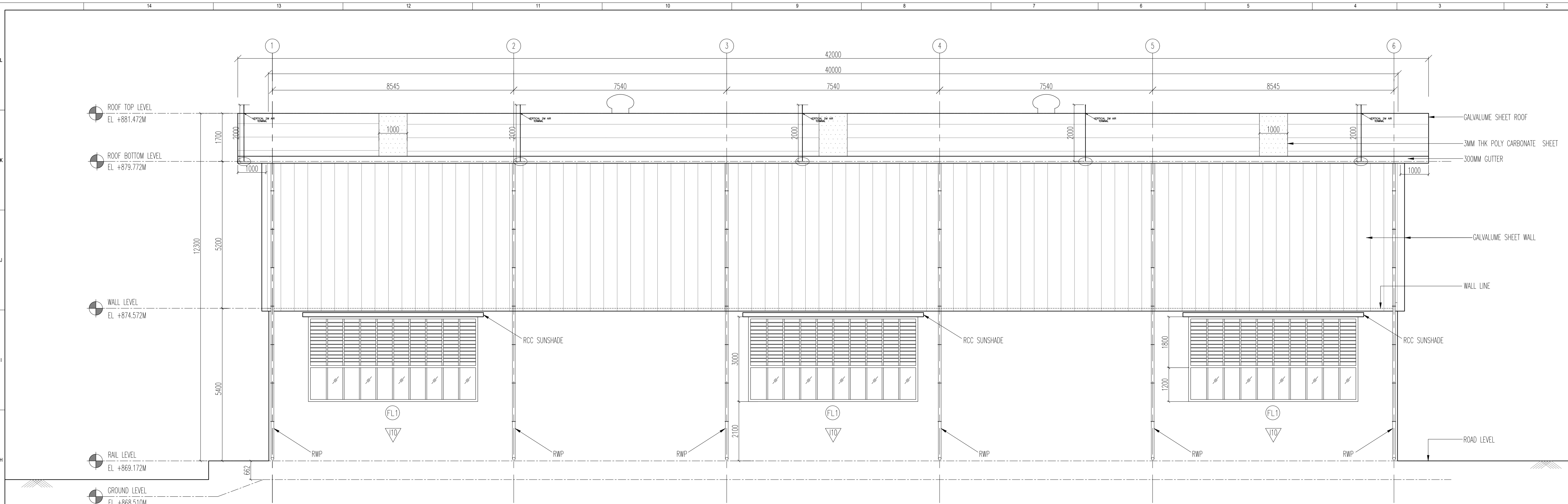
[illegible]

REVISIONS			DDC CONSULTANT
R5	07.06.2025	REVISED AS PER GC COMMENTS	 BALAJI RAILROAD SYSTEMS (P) LIMITED
R4	01.05.2025	REVISED AS PER GC COMMENTS	
R3	20.05.2025	REVISED AS PER GC COMMENTS	
R2	12.04.2025	REVISED AS PER GC COMMENTS	
R1	03.02.2025	REVISED AS PER GC COMMENTS	
REV.	03.02.2025	ROOF PLAN AND FLOOR PLAN	
REV.NO.	DATE	DESCRIPTION	

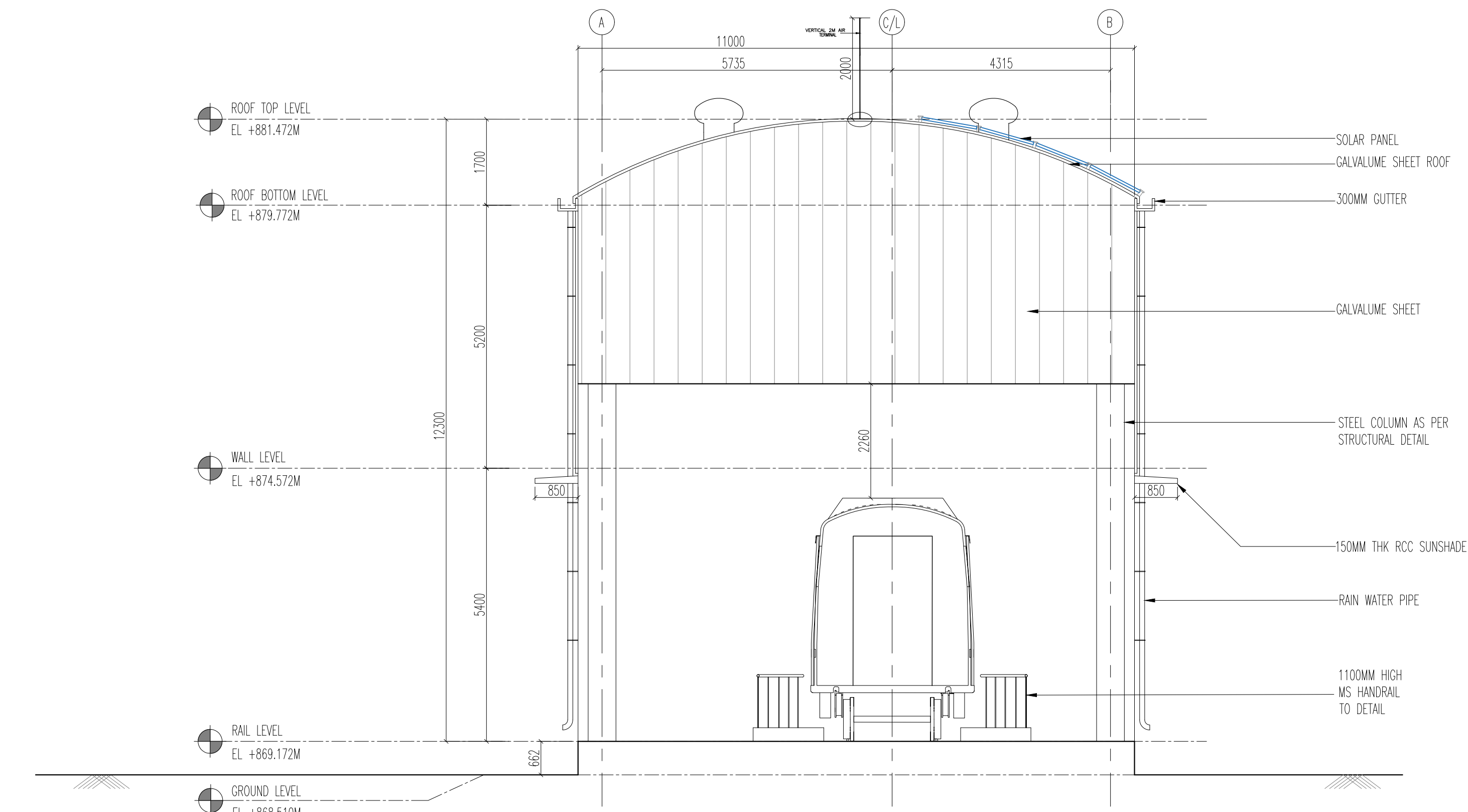
	DETAILED DESIGN CONSULTANT DDC					
	PREPARED , CHECKED AND APPROVED					
PROOF CONSULTANT (PC):		DESIGNATION	SIGNATURE	DATE	PC	CONSULTANT
	PREPARED BY	ARCHITECT				
	CHECKED BY	DESIGN LEAD				
	APPROVED BY	DGM-OPS				
	IGBC CONSULTANT					

GENERAL CONSULTANT(AECOM-EGIS-WSP)				
CHECKED AND APPROVED			COUNTER SIGN	
DESIGNATION	SIGNATURE	DATE	PROJECT DIRECTOR	
ARCHITECTURE			SIGNATURE	
STRUCTURAL			NAME	
E&M			DATE	
S&T				
ROLLING STOCK				
MEP				
TRACK				
TRACTION				
INTER FACE				
✓				

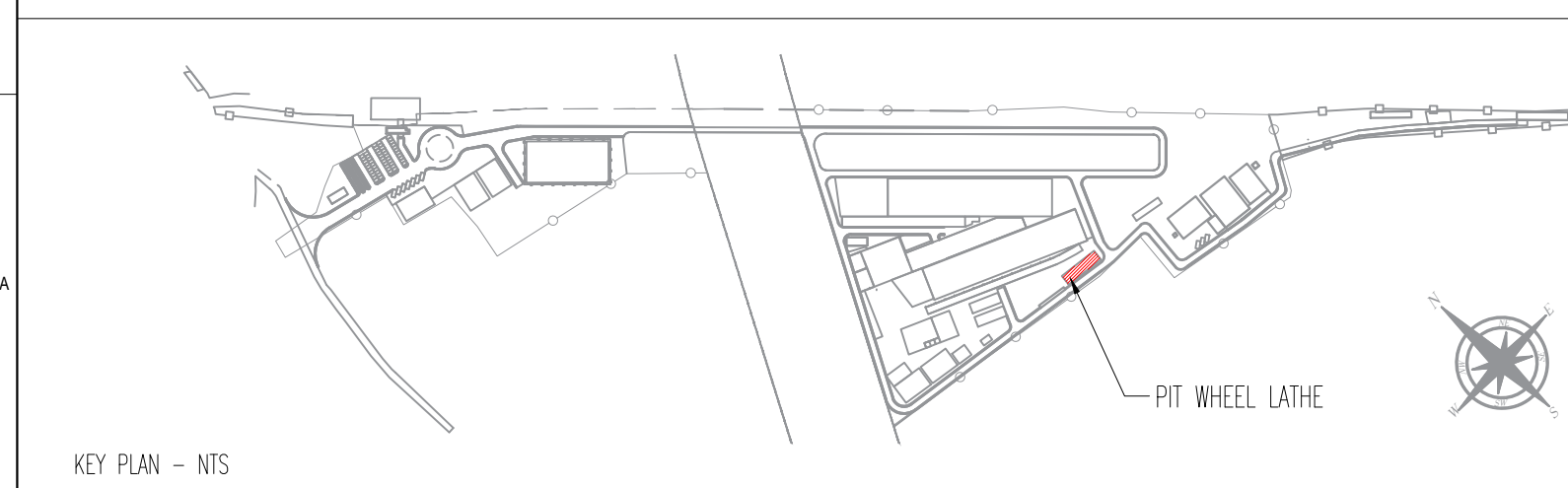
[illegible]







3 ELEVATION D
SCALE 1:75



4 ELEVATION C
SCALE 1:75

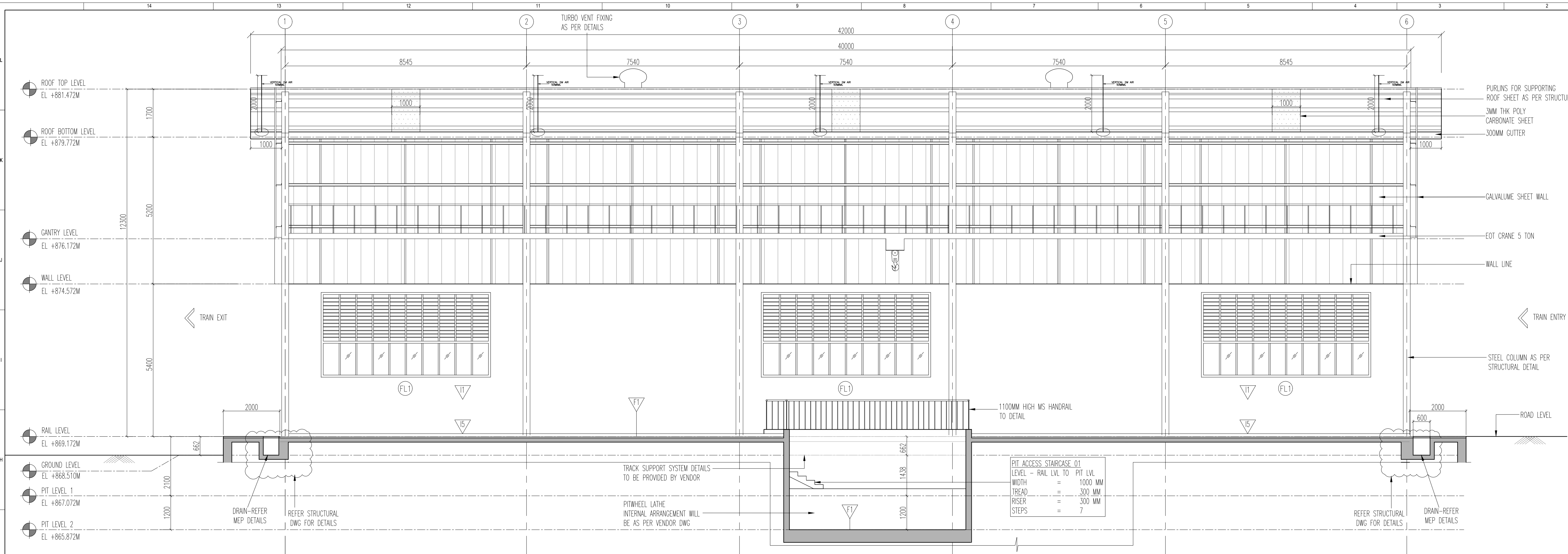


- NOTES
- THIS DRAWING IS FOR INFORMATION AND REFERENCE AS A GENERAL GUIDANCE ONLY.
 - ALL DEPOT FACILITIES, PLANTS & MACHINERIES, ACCOMMODATION FACILITIES, SYSTEM WIDE REQUIREMENTS ETC.SHAL BE VERIFIED FOR MAINTENANCE REQUIREMENT OF ROLLING STOCK AND INFRASTRUCTURE FACILITIES.
 - ALL DIMENSIONS ARE IN MM UNLESS NOTED OTHERWISE AND TO BE READONLY NOT MEASURED
 - ABSOLUTE RAIL LEVEL SHALL BE DERIVED FROM APPROVED ALIGNMENT DRAWINGS.
 - STRUCTURE SYSTEM SHOWN IS INDICATIVE. ALL STRUCTURE MEMBER SIZES TO BE DETAILED BY DESIGNER AT LATER STAGE.
 - THIS DRAWINGS HAVE BEEN DEVELOPED IN CONFORMITY TO DPR,SOD, BSRP& OTHER CODAL REQUIREMENTS.
 - SYSTEM ROOM SIZES, HEIGHTS, DOOR SIZE, FLOOR HEIGHT AND CUTOUT DIMENSIONS TO BE VERIFIED BY RELEVANT DISCIPLINES OF ENGINEERING.
 - SHAFTS FOR ELECTRICAL, S&T, PLUMBING, DRAINAGE, SEWAGEDISPOSAL, WATER HARVESTING, FIRE AND OTHER SYSTEMS SHALL BE PROVIDED AS PER SYSTEM AND MEP REQUIREMENTS.
 - ALL FINISHES ARE SUBJECT TO K-RIDE APPROVAL.
 - PITWHEEL LATHE INTERNAL ARRANGEMENT WILL BE AS PER VENDOR DWG.
 - CRANE ACCESS LADDERS ARE PORTABLE.
 - TURBO VENT POSITIONS WILL BE FINALIZED BY IGBC.
 - ALL ITEMS ARE AS PER BOQ.
 - LEVELS SHOWN ARE INDICATIVE FINAL LEVELS SHOULD BE CONFIRMED BEFORE EXECUTION OF THE WORK.
 - M&P INPUTS ARE MARKED TENTATIVELY

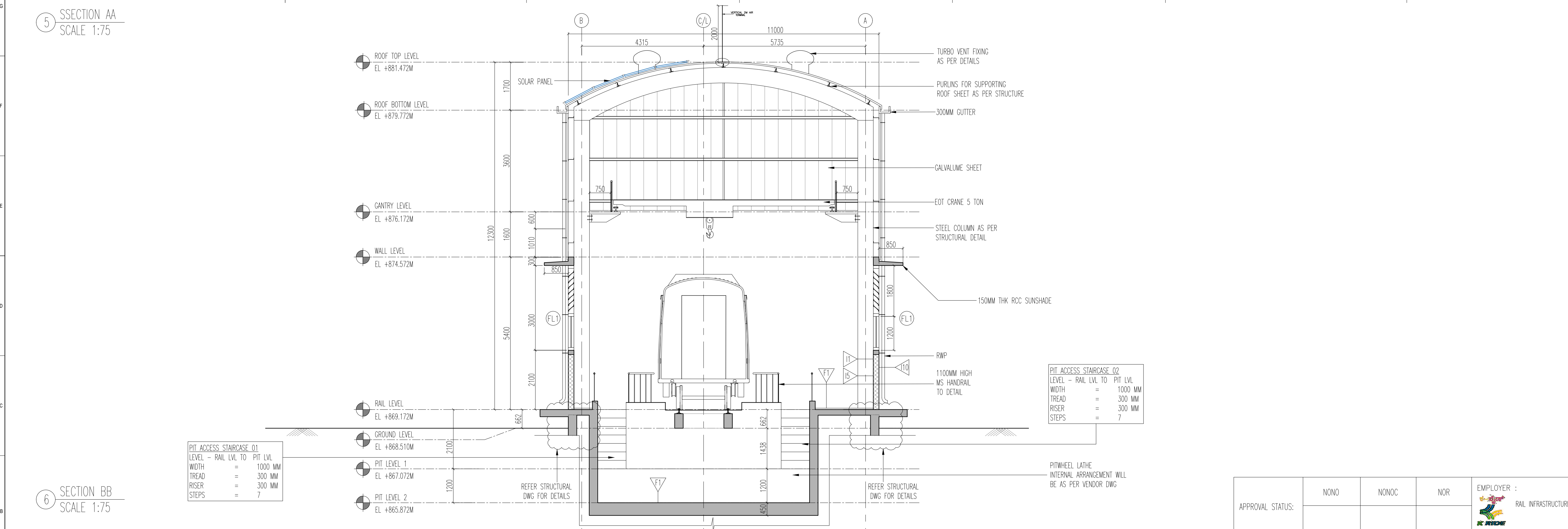
ABBREVIATIONS			
DE	DEAD END		
BS	BUFFER STOP		
CL	CENTER LINE		
HP	HIGH POINT		
RWP	RAIN WATER PIPE		
RWG	RAIN WATER GUTTER		
WINDOW SCHEDULE			
CODE	DIMENSION	SILL	LINTEL
FL1	6000X3000 MM	2100 MM	5100 MM
FLOOR FINISH SCHEDULE			
CODE	DESCRIPTION		
F1	HARDONITE FLOORING		
INTERNAL WALL FINISH SCHEDULE			
CODE	DESCRIPTION		
I1	ACRYLIC EMULSION PAINT		
I5	100 MM HIGH CEMENT SKIRTING		
I10	EXTERIOR EMULSION PAINT		
	200 MM THK BLOCKWORK		
	STRUCTURAL WALL AS/STR.Dwg		
	GALVALUME SHEET		
	TURBO VENT		

APPROVAL STATUS:	NONO	NONOC	NOR	EMPLOYER : RAIL INFRASTRUCTURE DEVELOPMENT COMPANY(KARNATAKA) LIMITED			
				PROJECT : BENGALURU SUBURBAN RAILWAY PROJECT (BSRP) KRIDE SOLADEVANAHALLI DEPOT			
				DRAWING TITLE : PIT WHEEL LATHE ELEVATIONS			
				DRAWING NO : SDH-DP-PIT-01-ARC-PD-002			
				SCALE - 1:75 AS SHOWN			
				PRELIMINARY DWG(PD),DEFINITIVE DWG(DD),CONSTRUCTION DWG(CD) AS BUILT DWG(BD), SHOP DWG(SD), MANUFACTURED DWG(MD)			
				SHEET NO. 2 OF 3			
				DATE 07.06.2025			
				REVISION R5			
				DWG STATUS PD			
				SHEET SIZE A1			

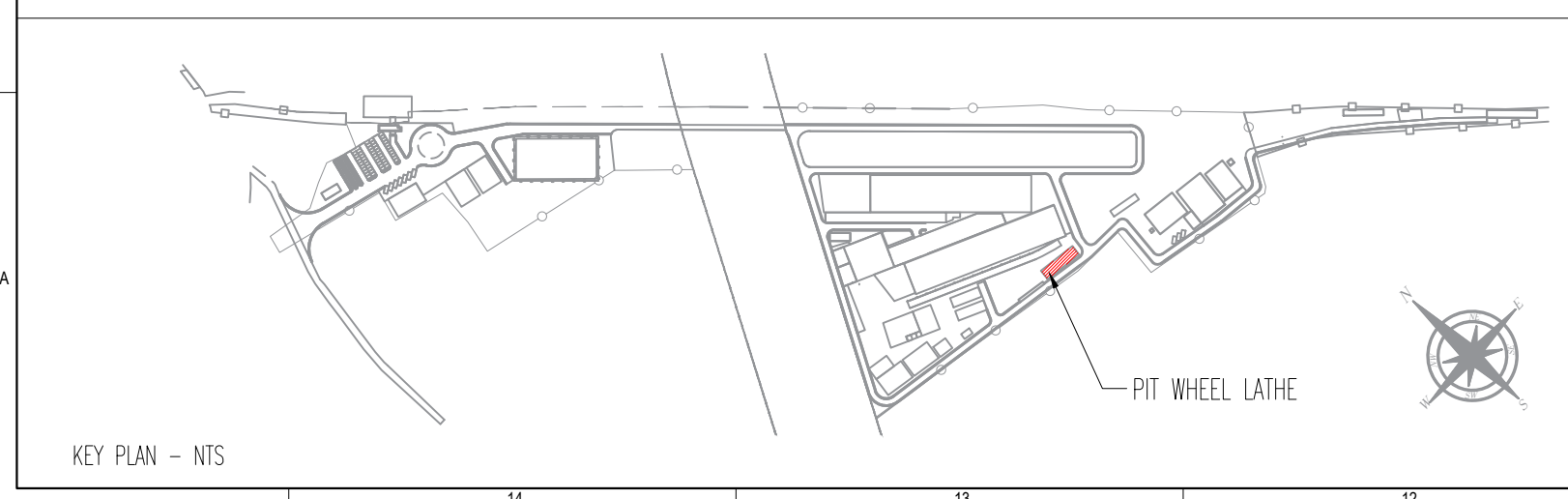
REVISIONS			DDC CONSULTANT		DETAILED DESIGN CONSULTANT DDC							GENERAL CONSULTANT(AECOM-E			
					PREPARED , CHECKED AND APPROVED							CHECKED AND APPROVED			
						DESIGNATION	SIGNATURE	DATE	PC	CONSULTANT	ARCHITECTURE	DESIGNATION	SIGNATURE	DATE	
											STRUCTURAL				
											E&M				
											S&T				
											ROLLING STOCK				
											MEP				
											TRACK				
											TRACTION				
											INTER FACE				







5 SECTION AA
SCALE 1:75



6 SECTION BB
SCALE 1:75



REVISIONS			DDC CONSULTANT	DETAILED DESIGN CONSULTANT DDC						GENERAL CONSULTANT(AECOM-EGIS-WSP)				KRIDE				PROJECT : BENGALURU SUBURBAN RAILWAY PROJECT (BSRP) KRIDE SOLADEVANAHALLI DEPOT				
				PREPARED , CHECKED AND APPROVED						CHECKED AND APPROVED			COUNTER SIGN	CHECKED AND APPROVED								
			PROOF CONSULTANT (PC):		DESIGNATION	SIGNATURE	DATE	PC	CONSULTANT	ARCHITECTURE	DESIGNATION	SIGNATURE	DATE	PROJECT DIRECTOR		ARCHITECTURE	DESIGNATION	SIGNATURE	DATE			
											STRUCTURAL						STRUCTURAL					
			 BALAJI RAILROAD SYSTEMS (P) LIMITED		PREPARED BY	ARCHITECT					E&M					E&M						
					CHECKED BY	DESIGN LEAD						S&T					GM DEPOT					
					APPROVED BY	DGM-OPS						ROLLING STOCK					DGM DEPOT					
					IGBC CONSULTANT							MEP										
												TRACK										
											TRACTION											
											INTER FACE											
REV.NO.	DATE	DESCRIPTION							APPROVED BY	ISSUED BY												
R5	07.06.2025	REVISED AS PER GC COMMENTS																				
R4	31.05.2025	REVISED AS PER GC COMMENTS																				
R3	20.05.2025	REVISED AS PER GC COMMENTS																				
R2	12.04.2025	REVISED AS PER GC COMMENTS																				
R1	03.02.2025	REVISED AS PER GC COMMENTS																				
R0	03.02.2025	SECTIONS																				
DRAWING TITLE : PIT WHEEL LATHE SECTIONS																						
DRAWING NO : SDH-DP-PIT-01-ARC-PD-003																						
SCALE - 1:75 AS SHOWN				SHEET NO. 3 OF 3		DATE 07.06.2025		REVISION R5		DWG STATUS PD												
PRELIMINARY DWG(PD),DEFINITIVE DWG(DD),CONSTRUCTION DWG(CD) AS BUILT DWG(BD), SHOP DWG(SD), MANUFACTURED DWG(MD)																				SHEET SIZE A1		